

GALNS Antibody (Center)
Affinity Purified Rabbit Polyclonal Antibody (Pab)
Catalog # AP11646c

Specification

GALNS Antibody (Center) - Product Information

| | |
|-------------------|--|
| Application | WB, FC, IF, IHC-P,E |
| Primary Accession | P34059 |
| Other Accession | Q32KJ6 , Q8WNQ7 , Q571E4 , NP_000503.1 |
| Reactivity | Human |
| Predicted | Mouse, Pig, Rat |
| Host | Rabbit |
| Clonality | Polyclonal |
| Isotype | Rabbit IgG |
| Calculated MW | 58026 |
| Antigen Region | 236-263 |

GALNS Antibody (Center) - Additional Information

Gene ID 2588

Other Names

N-acetylgalactosamine-6-sulfatase, Chondroitinsulfatase, Chondroitinase, Galactose-6-sulfate sulfatase, GalN6S, N-acetylgalactosamine-6-sulfate sulfatase, GalNAc6S sulfatase, GALNS

Target/Specificity

This GALNS antibody is generated from rabbits immunized with a KLH conjugated synthetic peptide between 236-263 amino acids from the Central region of human GALNS.

Dilution

WB~~1:1000
FC~~1:10~50
IF~~1:10~50
IHC-P~~1:10~50
E~~Use at an assay dependent concentration.

Format

Purified polyclonal antibody supplied in PBS with 0.09% (W/V) sodium azide. This antibody is purified through a protein A column, followed by peptide affinity purification.

Storage

Maintain refrigerated at 2-8°C for up to 2 weeks. For long term storage store at -20°C in small aliquots to prevent freeze-thaw cycles.

Precautions

GALNS Antibody (Center) is for research use only and not for use in diagnostic or therapeutic procedures.

GALNS Antibody (Center) - Protein Information

Name GALNS

Cellular Location

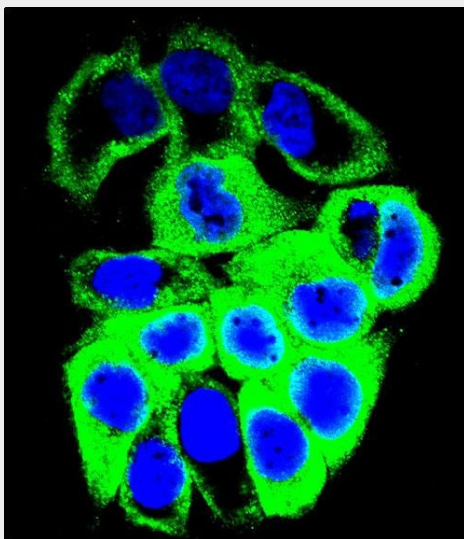
Lysosome.

GALNS Antibody (Center) - Protocols

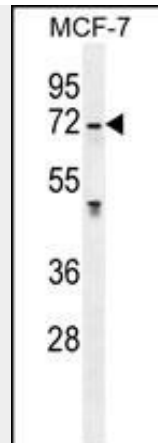
Provided below are standard protocols that you may find useful for product applications.

- [Western Blot](#)
- [Blocking Peptides](#)
- [Dot Blot](#)
- [Immunohistochemistry](#)
- [Immunofluorescence](#)
- [Immunoprecipitation](#)
- [Flow Cytometry](#)
- [Cell Culture](#)

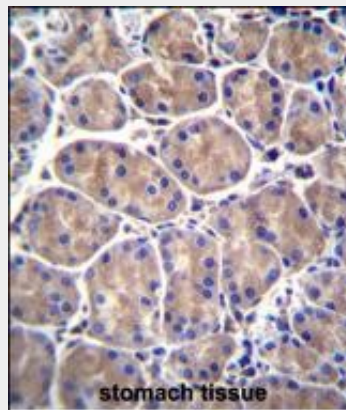
GALNS Antibody (Center) - Images



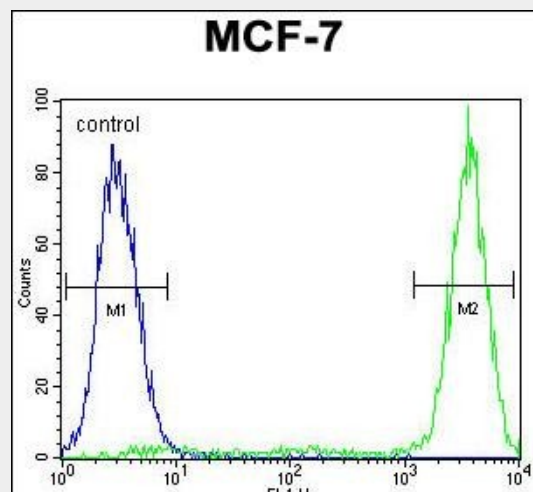
Confocal immunofluorescent analysis of GALNS Antibody (Center)(Cat#AP11646c) with MCF-7 cell followed by Alexa Fluor 488-conjugated goat anti-rabbit IgG (green).DAPI was used to stain the cell nuclear (blue).



GALNS Antibody (Center) (Cat. #AP11646c) western blot analysis in MCF-7 cell line lysates (35ug/lane). This demonstrates the GALNS antibody detected the GALNS protein (arrow).



GALNS Antibody (Center) (Cat. #AP11646c) immunohistochemistry analysis in formalin fixed and paraffin embedded human stomach tissue followed by peroxidase conjugation of the secondary antibody and DAB staining. This data demonstrates the use of GALNS Antibody (Center) for immunohistochemistry. Clinical relevance has not been evaluated.



GALNS Antibody (Center) (Cat. #AP11646c) flow cytometric analysis of MCF-7 cells (right histogram) compared to a negative control cell (left histogram). FITC-conjugated goat-anti-rabbit secondary antibodies were used for the analysis.

GALNS Antibody (Center) - Background

This gene encodes N-acetylgalactosamine-6-sulfatase which is a lysosomal exohydrolase required for the degradation of the glycosaminoglycans, keratan sulfate, and chondroitin 6-sulfate. Sequence alterations including point, missense and nonsense mutations, as well as those that affect splicing, result in a deficiency of this enzyme. Deficiencies of this enzyme lead to Morquio A syndrome, a lysosomal storage disorder. [provided by RefSeq].

GALNS Antibody (Center) - References

Rose, J.E., et al. Mol. Med. 16 (7-8), 247-253 (2010) :
Bank, R.A., et al. Mol. Genet. Metab. 97(3):196-201(2009)
Yan, S., et al. Biopolymers 92(5):399-404(2009)
Carraresi, L., et al. Clin. Chim. Acta 397 (1-2), 72-76 (2008) :
Bhattacharyya, S., et al. J. Biol. Chem. 283(15):9523-9530(2008)